

# APDEX: Measurement Tools and Reports

*Session 43A*

CMG International Conference  
San Diego, California  
December 5, 2007



Eric Repec  
Subject Matter Expert

(313) 227-7300  
Eric.Repec@compuware.com



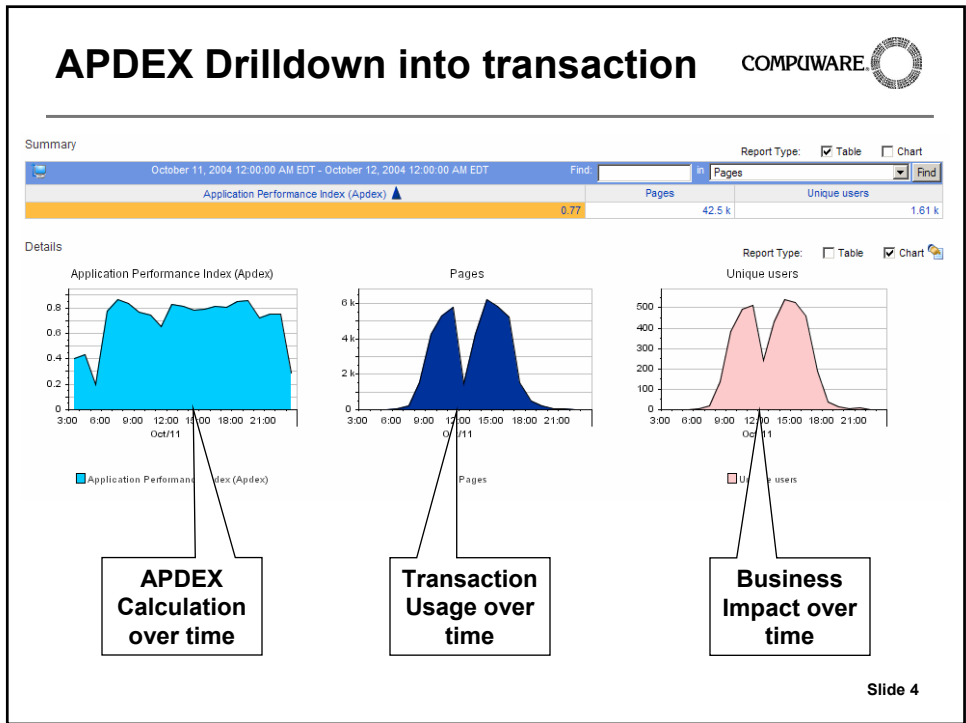
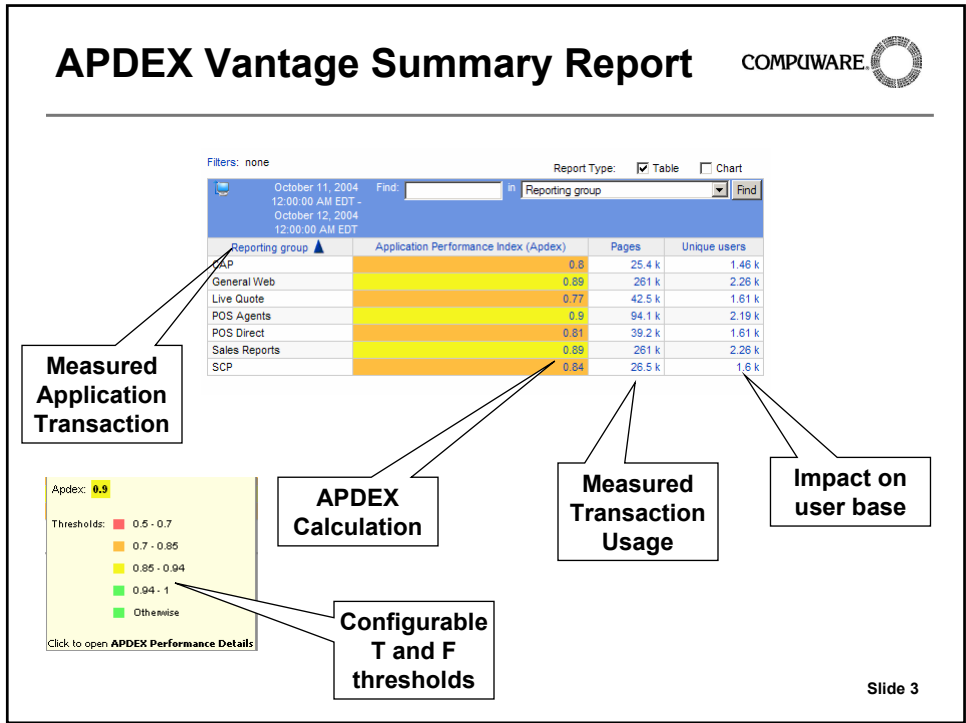
## APDEX: What is needed



In order to properly calculate the APDEX index you must have the following minimum capabilities within the monitoring tool.

- Application Specific decode
- Decode must identify transactions
- Decode must identify the user name and type
- Decode may need to identify location of user
- Flexible configuration of T (Tolerating) and F (Frustrated) thresholds for each unique transaction

# Session 43A Measurement Tools and Reports



## APDEX Conclusion



In conclusion the APDEX index is a simple way to identify areas within the monitored applications where there is a need for action. With the added impact and usage analysis immediate business decisions can be made to identify an order of attack when allocating resources to solve these problems.

In addition to the screens presented the monitoring tool should provide additional drilldown and correlation technology to not only identify users who are experiencing unsatisfactory application performance but also give reason for the poor performance.

Slide 5

## Thank You

